

\$715,000 - 220, 20 Silverado Crest Park Sw, Calgary

MLS® #A2243342

\$715,000

1 Bedroom, 2.00 Bathroom, 1,271 sqft

Residential on 0.08 Acres

Silverado, Calgary, Alberta

****Open House Saturday Sept 6th**

2:00-4:00PM** Minutes from Spruce Meadows

& Scirocco Golf Club + Easy Access to the

Mountains on 22X & quick access to Stoney

Trail. Discover the ease of low maintenance

living in this beautifully designed villa-style

home, perfectly located in the sought after

community of Silverado. Offering 1,271 square

feet of thoughtfully planned space, this one

bedroom plus den, 1.5 bathroom home is ideal

for those looking to downsize without

compromising comfort or style. Positioned

across from Spruce Meadows, this property

offers easy access to an 80 acre nature

reserve with paved walking paths, perfect for

morning strolls or peaceful evenings outdoors.

While youâ€™ll enjoy the serenity of nature at

your doorstep, youâ€™re still just minutes

from shopping, dining, and everyday

conveniences. Inside, the open concept layout

creates an inviting space for both relaxing and

entertaining. The chef inspired kitchen boasts

a spacious centre island, stainless steel

appliances, and ample storage, while the cozy

living area with its stone feature gas fireplace

provides the perfect spot to unwind. The

primary suite is a private retreat, complete with

a spa like 5 piece ensuite and walk-in closet. A

versatile den offers space for a home office,

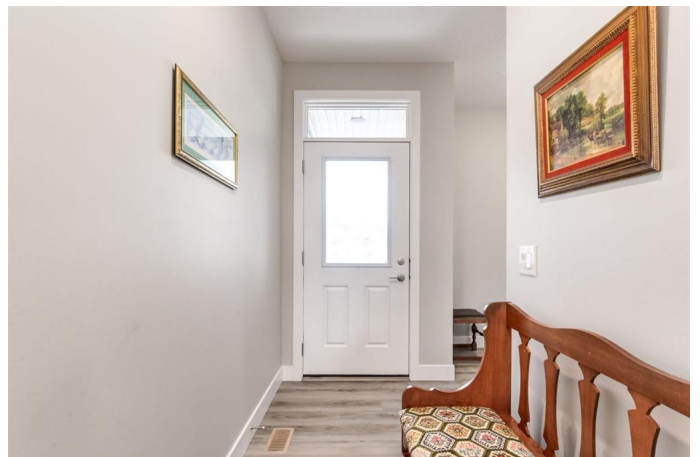
hobby room, or guest area. The unfinished

basement provides room for future

customization, whether you envision additional

living space, a guest suite, or extra storage.

Set in a quiet, well connected neighbourhood



with easy access to major roadways, this villa offers a perfect blend of convenience and tranquility. If youâ€™re seeking a home that allows you to simplify your lifestyle without sacrificing quality, this is the one.

Built in 2021

Essential Information

MLS® #	A2243342
Price	\$715,000
Bedrooms	1
Bathrooms	2.00
Full Baths	1
Half Baths	1
Square Footage	1,271
Acres	0.08
Year Built	2021
Type	Residential
Sub-Type	Semi Detached
Style	Side by Side, Villa
Status	Active

Community Information

Address	220, 20 Silverado Crest Park Sw
Subdivision	Silverado
City	Calgary
County	Calgary
Province	Alberta
Postal Code	T2X 4L3

Amenities

Amenities	Snow Removal
Parking Spaces	4
Parking	Double Garage Attached
# of Garages	2

Interior

Interior Features	Breakfast Bar, Double Vanity, High Ceilings, Kitchen Island, Open
-------------------	---

	Floorplan, Quartz Counters, Walk-In Closet(s)
Appliances	Dishwasher, Dryer, Garage Control(s), Microwave, Range Hood, Refrigerator, Washer, Window Coverings, Electric Range
Heating	Fireplace(s), Forced Air
Cooling	None
Fireplace	Yes
# of Fireplaces	1
Fireplaces	Gas
Has Basement	Yes
Basement	Full, Unfinished

Exterior

Exterior Features	Private Yard
Lot Description	Back Yard, Corner Lot, Front Yard, Landscaped, Lawn, Rectangular Lot
Roof	Asphalt Shingle
Construction	Wood Frame
Foundation	Poured Concrete

Additional Information

Date Listed	July 25th, 2025
Days on Market	42
Zoning	R-G
HOA Fees	210
HOA Fees Freq.	ANN

Listing Details

Listing Office	Real Broker
----------------	-------------

Data is supplied by Pillar 9â„¢ MLS® System. Pillar 9â„¢ is the owner of the copyright in its MLS® System. Data is deemed reliable but is not guaranteed accurate by Pillar 9â„¢. The trademarks MLS®, Multiple Listing Service® and the associated logos are owned by The Canadian Real Estate Association (CREA) and identify the quality of services provided by real estate professionals who are members of CREA. Used under license.