

# \$415,000 - 200, 7707 Martha's Haven Park Ne, Calgary

MLS® #A2237173

**\$415,000**

3 Bedroom, 2.00 Bathroom, 1,307 sqft  
Residential on 0.00 Acres

Martindale, Calgary, Alberta

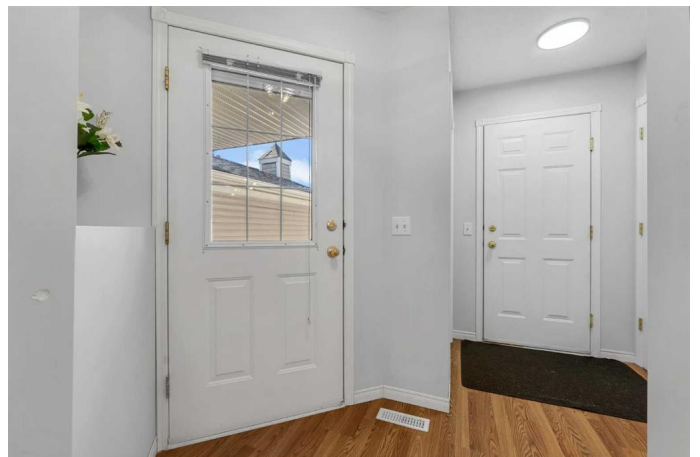
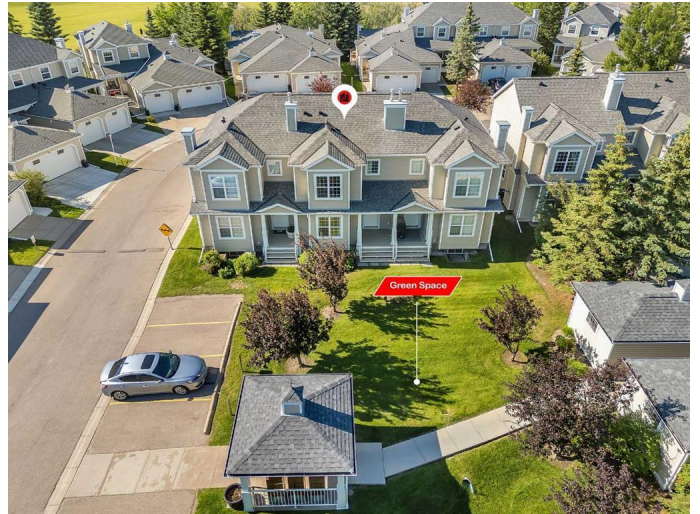
| SOUTH FACING UNIT | BACKING ONTO  
GREEN SPACE | CONVENIENT LOCATION |  
3 BEDROOM + 2 BATH | ATTACHED  
GARAGE | IN-UNIT LAUNDRY |  
RENOVATED |

Welcome to this well-maintained 3-bedroom townhouse with an attached garage, ideally located in the established and amenity-rich community of Martindale. Tucked away on a quiet street and facing lush green space, this home offers privacy, convenience, and comfort—all in one.

Step onto the charming front porch and into a spacious, light-filled living room that flows effortlessly into the heart of the home—the kitchen. Designed for both function and style, the kitchen features stainless steel appliances, ample cabinetry, quartz countertops, and a large center island—perfect for entertaining or enjoying casual meals. The adjoining dining area is enhanced by a modern light fixture, creating a cozy yet elegant space to gather with family and friends.

A convenient 2-piece bathroom, a mudroom with direct access to the attached garage, and additional closet space round out the main level.

Upstairs, you'll find three well-proportioned bedrooms including a spacious primary suite complete with a large walk-in closet. A 4-piece



bathroom serves this level, and the added bonus of upper-level laundry makes everyday living a breeze.

The basement is a blank canvasâ€”generously sized and ready for your future development, whether itâ€™s a home gym, rec room, or additional living space.

Outside, enjoy the serene green space view right at your doorstep. This unbeatable location is just minutes from schools, parks, shopping plazas, and public transportation. You're also a short drive to Calgary International Airport, the LRT, and major routes like Metis Trailâ€”making your commute or weekend travel incredibly convenient.

Whether you're a first-time homebuyer, downsizer, or investor, this thoughtfully designed home is one you wonâ€™t want to miss!

Built in 1999

**Essential Information**

MLS® #	A2237173
Price	\$415,000
Bedrooms	3
Bathrooms	2.00
Full Baths	1
Half Baths	1
Square Footage	1,307
Acres	0.00
Year Built	1999
Type	Residential
Sub-Type	Row/Townhouse
Style	2 Storey
Status	Active

**Community Information**

Address	200, 7707 Martha's Haven Park Ne
Subdivision	Martindale
City	Calgary
County	Calgary
Province	Alberta
Postal Code	T3J 3Z7

### Amenities

Amenities	Snow Removal, Visitor Parking
Parking Spaces	2
Parking	Additional Parking, Covered, Driveway, Garage Door Opener, Off Street, Owned, Secured, Single Garage Attached, Garage Faces Rear, Outside
# of Garages	1

### Interior

Interior Features	Closet Organizers, No Animal Home, No Smoking Home, Open Floorplan, Storage, Vinyl Windows
Appliances	Dishwasher, Electric Stove, Microwave, Range Hood, Refrigerator, Washer/Dryer Stacked
Heating	Forced Air
Cooling	None
# of Stories	2
Has Basement	Yes
Basement	Full, Unfinished

### Exterior

Exterior Features	BBQ gas line
Lot Description	City Lot, Few Trees, Low Maintenance Landscape, Other, Rectangular Lot, Interior Lot
Roof	Asphalt Shingle
Construction	Vinyl Siding, Wood Frame
Foundation	Poured Concrete

### Additional Information

Date Listed	July 4th, 2025
Days on Market	48
Zoning	M-C1 d44

### Listing Details

Listing Office	Real Broker
----------------	-------------

Data is supplied by Pillar 9â„¢ MLS® System. Pillar 9â„¢ is the owner of the copyright in its MLS® System. Data is deemed reliable but is not guaranteed accurate by Pillar 9â„¢. The trademarks MLS®, Multiple Listing Service® and the associated logos are owned by The Canadian Real Estate Association (CREA) and identify the quality of services provided by real estate professionals who are members of CREA. Used under license.