

# \$485,000 - 218 Pinemeadow Road Ne, Calgary

MLS® #A2235961

**\$485,000**

3 Bedroom, 1.00 Bathroom, 920 sqft

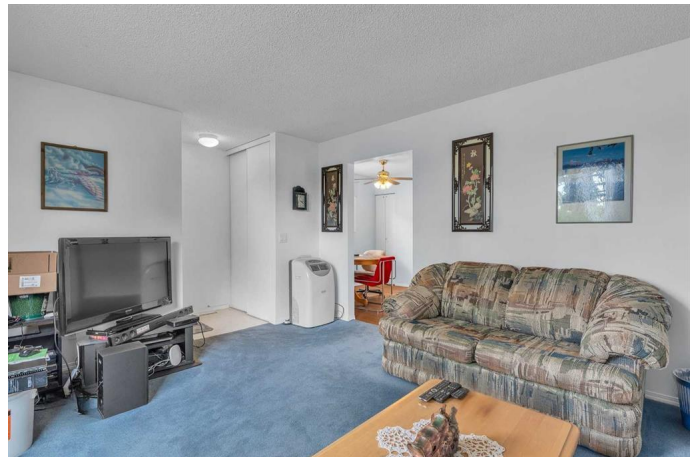
Residential on 0.09 Acres

Pineridge, Calgary, Alberta

Situated on a large, deep corner lot with R-CG zoning, this well-maintained bungalow in PineRidge offers flexibility for homeowners or future development potential. Featuring 3 bedrooms, a partially finished basement, and an oversized detached double garage, this home delivers on both function and opportunity. The main floor features a practical layout with the living room at the front, a central kitchen and dining area, and three bedrooms tucked at the back of the home across from a full 4-piece bathroom. Interior finishes include a mix of carpet and laminate flooring, with updated windows throughout offering excellent natural light. The south-facing backyard is private, sunny, and spacious—perfect for gardening, entertaining, or relaxing outdoors. The basement is partially finished and offers a large family room, dedicated laundry, and ample storage. Additional highlights include central air conditioning, a newer furnace, and a 23' x 21' double detached garage with rear access. Located in the heart of PineRidge, this home is close to schools, parks, shopping, and major routes. Whether you're looking for your starter home, a rental investment, or redevelopment potential with R-CG zoning, this one checks all the boxes. Book your private showing today!

Built in 1982

## Essential Information



|                |             |
|----------------|-------------|
| MLS® #         | A2235961    |
| Price          | \$485,000   |
| Bedrooms       | 3           |
| Bathrooms      | 1.00        |
| Full Baths     | 1           |
| Square Footage | 920         |
| Acres          | 0.09        |
| Year Built     | 1982        |
| Type           | Residential |
| Sub-Type       | Detached    |
| Style          | Bungalow    |
| Status         | Active      |

### Community Information

|             |                        |
|-------------|------------------------|
| Address     | 218 Pinemeadow Road Ne |
| Subdivision | Pineridge              |
| City        | Calgary                |
| County      | Calgary                |
| Province    | Alberta                |
| Postal Code | T1Y4N9                 |

### Amenities

|                |   |
|----------------|---|
| Parking Spaces | 2   |
| Parking        | Double Garage Detached, Alley Access, Oversized, Rear Drive |
| # of Garages   | 2   |

### Interior

|                   |  |
|-------------------|--|
| Interior Features | See Remarks  |
| Appliances        | Dryer, Electric Stove, Range Hood, Refrigerator, Window Coverings, Central Air Conditioner, Washer |
| Heating           | Forced Air, Natural Gas  |
| Cooling           | Central Air  |
| Fireplace         | Yes  |
| # of Fireplaces   | 1  |
| Fireplaces        | Wood Burning   |
| Has Basement      | Yes  |
| Basement          | Full, Partially Finished   |

### Exterior

|                   |                          |
|-------------------|--------------------------|
| Exterior Features | Other                    |
| Lot Description   | Corner Lot               |
| Roof              | Asphalt Shingle          |
| Construction      | Vinyl Siding, Wood Frame |
| Foundation        | Poured Concrete          |

**Additional Information**

|                |                |
|----------------|----------------|
| Date Listed    | July 1st, 2025 |
| Days on Market | 53             |
| Zoning         | R-CG           |

**Listing Details**

|                |           |
|----------------|-----------|
| Listing Office | 2% Realty |
|----------------|-----------|

Data is supplied by Pillar 9â„¢ MLS® System. Pillar 9â„¢ is the owner of the copyright in its MLS® System. Data is deemed reliable but is not guaranteed accurate by Pillar 9â„¢. The trademarks MLS®, Multiple Listing Service® and the associated logos are owned by The Canadian Real Estate Association (CREA) and identify the quality of services provided by real estate professionals who are members of CREA. Used under license.