

# \$469,900 - 1902, 280 Chelsea Road, Chestermere

MLS® #A2228090

**\$469,900**

4 Bedroom, 3.00 Bathroom, 1,614 sqft

Residential on 0.00 Acres

Chelsea\_CH, Chestermere, Alberta

OPEN HOUSE Saturday August 23th 1-3pm!!!

4 BEDROOM or 3 PLUS DEN/OFFICE - 2024

BUILD - 1614 SF - DOUBLE ATTACHED

GARAGE - CLOSE TO CHESTERMERE

LAKE. Welcome to your dream home! One

year old built in 2024, this tastefully modern

townhome has 1614 SF of stylish, comfortable

living! Located in the highly sought-after city of

Chestermere, located near schools, parks,

shops, Chestermere Lake, Cove Beach and

only 15 minutes from Calgary and major

highway routes, this gem puts you at the heart

of everything. Step into your ground floor level

giving you access to a spacious front home

office, extra bedroom or sitting area and direct

access to your rear attached double garage.

Main level boasts a bright, open-concept

layout featuring high-end vinyl plank flooring

throughout and striking large windows ensures

you don't miss any sunlight. Enjoy your

spacious balcony equipped with a BBQ gas

line and a serene view over the quiet

neighborhood, perfect for morning coffee,

hosting a family BBQ or a relaxing evening.

The gorgeous chef's kitchen is the true

heart of the home, complete with brand-new

stainless-steel appliances, shining granite

counters, full-height cabinetry, and sleek

recessed pot lighting. Moving to the third level

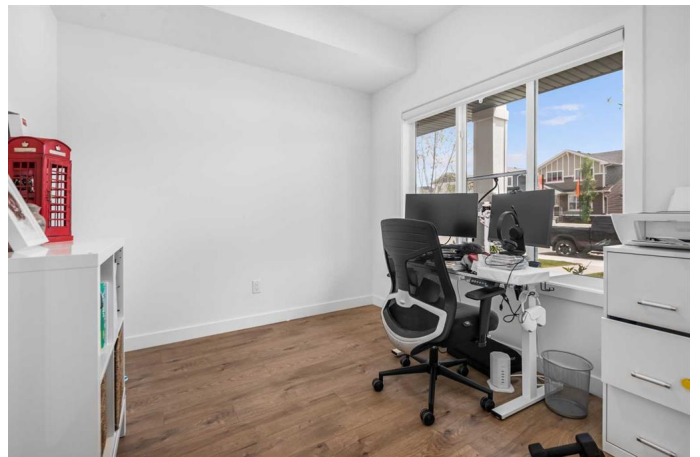
the large primary bedroom with a full 4-piece

ensuite and walk-in closet are sure to impress

while 2 more bedrooms create unmatched

versatility with a second full bathroom serving

them. With an unbeatable location and all



modern features from top to bottom, this  
condo offers comfort, style, and convenience  
youâ€™ll fall in love withâ€”book your private  
showing today!

Built in 2024

**Essential Information**

MLS® #	A2228090
Price	\$469,900
Bedrooms	4
Bathrooms	3.00
Full Baths	2
Half Baths	1
Square Footage	1,614
Acres	0.00
Year Built	2024
Type	Residential
Sub-Type	Row/Townhouse
Style	3 Storey
Status	Active

**Community Information**

Address	1902, 280 Chelsea Road
Subdivision	Chelsea_CH
City	Chestermere
County	Chestermere
Province	Alberta
Postal Code	T1X 2X9

**Amenities**

Amenities	Park, Playground, Visitor Parking
Parking Spaces	2
Parking	Double Garage Attached
# of Garages	2

**Interior**

Interior Features	Closet Organizers, Granite Counters, Kitchen Island, No Animal Home, No Smoking Home, Open Floorplan, See Remarks, Vinyl Windows,
-------------------	---

	Walk-In Closet(s)
Appliances	Dishwasher, Electric Stove, Garage Control(s), Microwave Hood Fan, Refrigerator, Washer/Dryer, Window Coverings
Heating	Forced Air, Natural Gas
Cooling	None
Basement	None

## Exterior

Exterior Features	Balcony, BBQ gas line
Lot Description	Back Lane, Front Yard, Landscaped, Level, See Remarks
Roof	Asphalt Shingle
Construction	Vinyl Siding, Wood Frame
Foundation	Poured Concrete

## Additional Information

Date Listed	June 5th, 2025
Days on Market	92
Zoning	M-G

## Listing Details

Listing Office	2% Realty
----------------	-----------

Data is supplied by Pillar 9â„¢ MLS® System. Pillar 9â„¢ is the owner of the copyright in its MLS® System. Data is deemed reliable but is not guaranteed accurate by Pillar 9â„¢. The trademarks MLS®, Multiple Listing Service® and the associated logos are owned by The Canadian Real Estate Association (CREA) and identify the quality of services provided by real estate professionals who are members of CREA. Used under license.