

# \$485,000 - 817 Canfield Way Sw, Calgary

MLS® #A2226213

**\$485,000**

4 Bedroom, 2.00 Bathroom, 1,036 sqft

Residential on 0.08 Acres

Canyon Meadows, Calgary, Alberta

Move into your own home with no condo fees!

This fully finished 1/2 duplex features hardwood floors, 2 four piece updated bathrooms, updated kitchen cabinets, 3 good sized bedrooms up and one down! The large living room has vaulted ceilings and newer patio doors opening to a porch. All windows upstairs have been updated as well. This great home is in a great location, close to schools, the LRT and Southcentre Shopping Mall.

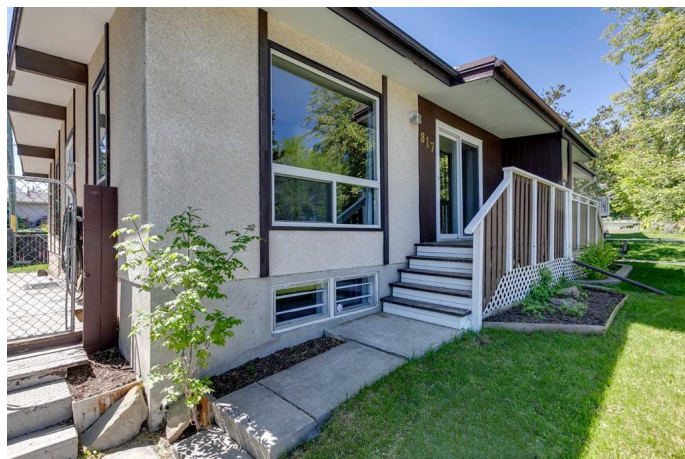
Built in 1969

## Essential Information

MLS® #	A2226213
Price	\$485,000
Bedrooms	4
Bathrooms	2.00
Full Baths	2
Square Footage	1,036
Acres	0.08
Year Built	1969
Type	Residential
Sub-Type	Semi Detached
Style	Side by Side, Bi-Level
Status	Active

## Community Information

Address	817 Canfield Way Sw
Subdivision	Canyon Meadows



City	Calgary
County	Calgary
Province	Alberta
Postal Code	T2W 1K2

### **Amenities**

Parking Spaces	1
Parking	Off Street, Parking Pad

### **Interior**

Interior Features	Ceiling Fan(s), Jetted Tub, Vinyl Windows
Appliances	Dryer, Electric Range, Refrigerator, Washer, Window Coverings
Heating	Forced Air
Cooling	None
Has Basement	Yes
Basement	Finished, Full

### **Exterior**

Exterior Features	Private Yard
Lot Description	Back Lane, Back Yard
Roof	Asphalt Shingle
Construction	Stucco, Wood Frame
Foundation	Poured Concrete

### **Additional Information**

Date Listed	May 30th, 2025
Days on Market	10
Zoning	R-CG

### **Listing Details**

Listing Office	Real Estate Professionals Inc.
----------------	--------------------------------

Data is supplied by Pillar 9â„¢ MLS® System. Pillar 9â„¢ is the owner of the copyright in its MLS® System. Data is deemed reliable but is not guaranteed accurate by Pillar 9â„¢. The trademarks MLS®, Multiple Listing Service® and the associated logos are owned by The Canadian Real Estate Association (CREA) and identify the quality of services provided by real estate professionals who are members of CREA. Used under license.