

# \$575,000 - 825 Edgefield Street, Strathmore

MLS® #A2224477

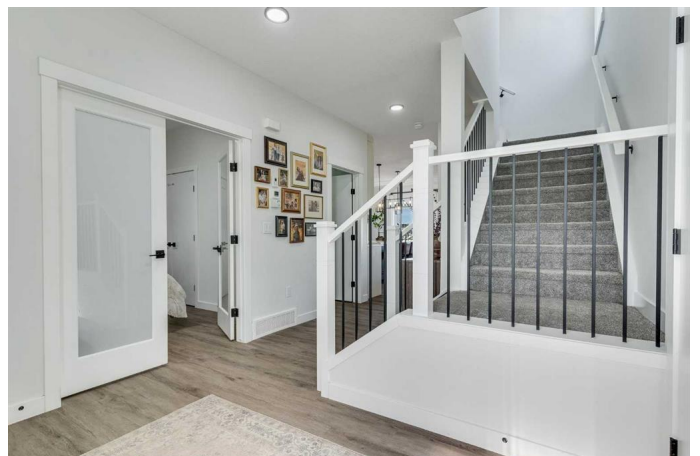
**\$575,000**

6 Bedroom, 4.00 Bathroom, 1,928 sqft

Residential on 0.08 Acres

Edgefield, Strathmore, Alberta

Welcome to Edgefield in Strathmore, where your new home is located on a quiet street with a west-facing backyard that backs directly onto a greenspace! Step inside and youâ€™re immediately welcomed by a bright, open concept living space, attractively upgraded, with absolutely nothing to do but move in and enjoy! Picture yourself enjoying breakfast at the island, baking treats in the kitchen, or hosting friends and family in the sunlit living and dining areas. The main floor is complete with a half bath and a main floor bedroom ideal for guests or a home office, thoughtfully tucked away from the main living space for privacy. Retreat upstairs to your primary bedroom spacious enough for your king-sized bed, complete with a 5-piece ensuite and a large walk-in closet. A bonus room offers the perfect spot for movie nights or a dedicated play area, while two additional bedrooms and upper laundry add function and flexibility. Downstairs, the fully developed basement, with a separate entrance, offers even more room to grow. It includes a large rec room, two additional bedrooms, and a full bathroom, providing great potential for multigenerational living or added privacy. And oh, the sun-soaked, west-facing backyard is your personal chill area to take in the rays and let the kids play while not having to worry about any neighbours behind you! This exceptional 2-storey home features a semi-attached double garage with a stand alone house and approx. 2700 total square feet of warmth,



comfort, and beautiful customization!  
Strathmore is a vibrant, family-oriented community known for its friendly neighbours and small-town feel, just a short 30 minute drive from Calgary. This appealing home won't wait around forever - schedule your exclusive tour now!

Built in 2021

### Essential Information

MLS® #	A2224477
Price	\$575,000
Bedrooms	6
Bathrooms	4.00
Full Baths	3
Half Baths	1
Square Footage	1,928
Acres	0.08
Year Built	2021
Type	Residential
Sub-Type	Detached
Style	2 Storey, Side by Side
Status	Active

### Community Information

Address	825 Edgefield Street
Subdivision	Edgefield
City	Strathmore
County	Wheatland County
Province	Alberta
Postal Code	T1P 0H6

### Amenities

Parking Spaces	4
Parking	Double Garage Attached
# of Garages	2

### Interior

Interior Features	Double Vanity, Kitchen Island, No Smoking Home, Open Floorplan, Pantry, Separate Entrance, Storage, Walk-In Closet(s)
Appliances	Dishwasher, Dryer, Garage Control(s), Gas Range, Range Hood, Refrigerator, Washer, Window Coverings
Heating	Forced Air, Natural Gas
Cooling	None
Fireplace	Yes
# of Fireplaces	1
Fireplaces	Electric, Living Room
Has Basement	Yes
Basement	Finished, Full

## Exterior

Exterior Features	BBQ gas line, Private Entrance, Private Yard
Lot Description	Back Yard, Backs on to Park/Green Space, Front Yard, Garden, Landscaped, No Neighbours Behind, Rectangular Lot
Roof	Asphalt Shingle
Construction	Concrete, Vinyl Siding, Wood Frame
Foundation	Poured Concrete

## Additional Information

Date Listed	May 28th, 2025
Days on Market	35
Zoning	R2

## Listing Details

Listing Office	Century 21 Bamber Realty LTD.
----------------	-------------------------------

Data is supplied by Pillar 9â„¢ MLSÂ® System. Pillar 9â„¢ is the owner of the copyright in its MLSÂ® System. Data is deemed reliable but is not guaranteed accurate by Pillar 9â„¢. The trademarks MLSÂ®, Multiple Listing ServiceÂ® and the associated logos are owned by The Canadian Real Estate Association (CREA) and identify the quality of services provided by real estate professionals who are members of CREA. Used under license.