

# \$764,900 - 60 Key Cove Sw, Airdrie

MLS® #A2205132

**\$764,900**

3 Bedroom, 3.00 Bathroom, 2,469 sqft

Residential on 0.11 Acres

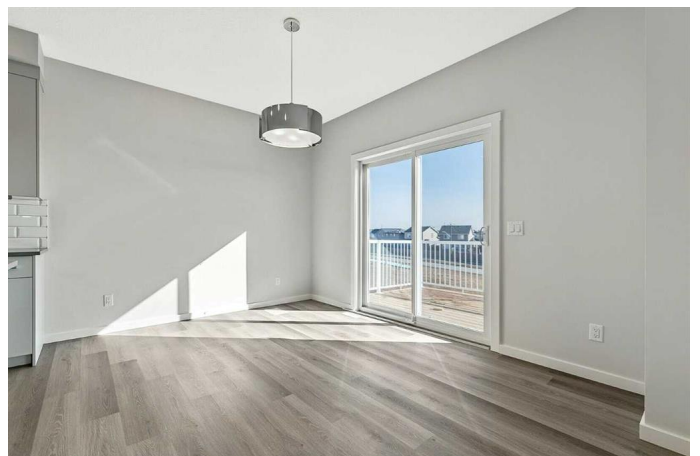
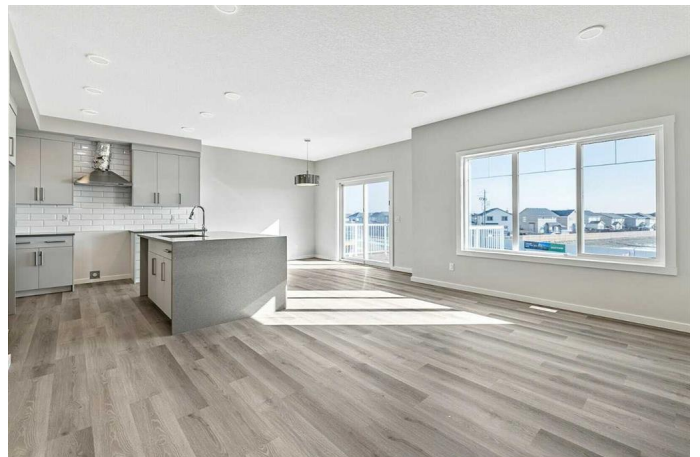
Key Ranch, Airdrie, Alberta

Nestled in the peaceful, family-friendly Key Ranch community, this home offers a serene environment with walking paths and easy access to local amenities. Enjoy the best of both worlds: a quiet, suburban setting just moments from everything you need. This luxurious walkout home features a rear elevated deck and ground-level concrete patio, perfect for outdoor entertaining. The spacious main floor flex room with sliding barn doors is ideal for a home office or study. Inside, you'll find 9' knockdown ceilings and a stunning L-shaped kitchen with a large central island, walk-through pantry, stainless steel appliances, quartz countertops, and soft-close cabinets. The primary bedroom retreat offers a 5-piece ensuite with a free-standing soaker tub, walk-in shower, and dual vanities. Additional highlights include luxury vinyl plank flooring, a 50" electric fireplace, triple-pane windows, high-efficiency furnace, and an included Smart Home System for added convenience. Photos are representative.

Built in 2025

## Essential Information

|            |           |
|------------|-----------|
| MLS® #     | A2205132  |
| Price      | \$764,900 |
| Bedrooms   | 3         |
| Bathrooms  | 3.00      |
| Full Baths | 2         |



|                |             |
|----------------|-------------|
| Half Baths     | 1           |
| Square Footage | 2,469       |
| Acres          | 0.11        |
| Year Built     | 2025        |
| Type           | Residential |
| Sub-Type       | Detached    |
| Style          | 2 Storey    |
| Status         | Active      |

### **Community Information**

|             |                |
|-------------|----------------|
| Address     | 60 Key Cove Sw |
| Subdivision | Key Ranch      |
| City        | Airdrie        |
| County      | Airdrie        |
| Province    | Alberta        |
| Postal Code | T4B3N8         |

### **Amenities**

|                |                        |
|----------------|------------------------|
| Parking Spaces | 4                      |
| Parking        | Double Garage Attached |
| # of Garages   | 2                      |

### **Interior**

|                   |  |
|-------------------|--|
| Interior Features | Double Vanity, Bathroom Rough-in                     |
| Appliances        | Dishwasher, Electric Range, Range Hood, Refrigerator |
| Heating           | Forced Air, Natural Gas                              |
| Cooling           | None   |
| Fireplace         | Yes  |
| # of Fireplaces   | 1  |
| Fireplaces        | Decorative, Electric                                 |
| Has Basement      | Yes  |
| Basement          | Full, Walk-Out, Unfinished                           |

### **Exterior**

|                   |                              |
|-------------------|------------------------------|
| Exterior Features | None                         |
| Lot Description   | Backs on to Park/Green Space |
| Roof              | Asphalt Shingle              |
| Construction      | Vinyl Siding, Wood Frame     |
| Foundation        | Poured Concrete              |

**Additional Information**

|                |                  |
|----------------|------------------|
| Date Listed    | March 25th, 2025 |
| Days on Market | 78               |
| Zoning         | R1-U             |

**Listing Details**

|                |                    |
|----------------|--------------------|
| Listing Office | Bode Platform Inc. |
|----------------|--------------------|

Data is supplied by Pillar 9â„¢ MLS® System. Pillar 9â„¢ is the owner of the copyright in its MLS® System. Data is deemed reliable but is not guaranteed accurate by Pillar 9â„¢. The trademarks MLS®, Multiple Listing Service® and the associated logos are owned by The Canadian Real Estate Association (CREA) and identify the quality of services provided by real estate professionals who are members of CREA. Used under license.