

\$274,900 - 245, 300 Marina Drive, Chestermere

MLS® #A2202701

\$274,900

2 Bedroom, 1.00 Bathroom, 802 sqft

Residential on 0.00 Acres

Westmere, Chestermere, Alberta

Welcome to 245, 300 Marina Drive, a bright and inviting top-floor stacked townhouse in the heart of Chestermere. This 2-bedroom, 1-bathroom unit offers an open-concept design that seamlessly connects the kitchen, dining area, and living room, creating a spacious and functional living space.

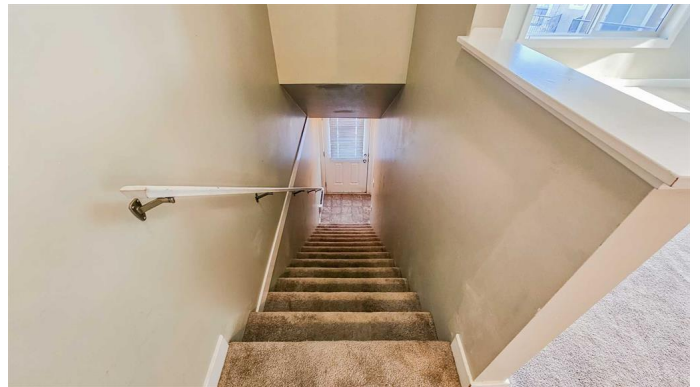
Enjoy plenty of natural light and beautiful sunny views from the southwest-facing balcony, perfect for relaxing or entertaining. The unit also features in-suite laundry for added convenience and comes with one assigned parking stall.

Located just steps away from Chestermere Lake, shopping, dining, and walking paths, this home is ideal for first-time buyers, downsizers, or investors. Don't miss out on this fantastic opportunity—schedule your viewing today!

Built in 2012

Essential Information

MLS® #	A2202701
Price	\$274,900
Bedrooms	2
Bathrooms	1.00
Full Baths	1
Square Footage	802
Acres	0.00



Year Built	2012
Type	Residential
Sub-Type	Row/Townhouse
Style	Stacked Townhouse
Status	Active

Community Information

Address	245, 300 Marina Drive
Subdivision	Westmere
City	Chestermere
County	Chestermere
Province	Alberta
Postal Code	T1X 0P6

Amenities

Amenities	None
Parking Spaces	1
Parking	Stall

Interior

Interior Features	See Remarks
Appliances	Dishwasher, Dryer, Electric Stove, Refrigerator, Washer
Heating	Forced Air
Cooling	None
Basement	None

Exterior

Exterior Features	None
Lot Description	See Remarks
Roof	Asphalt Shingle
Construction	Stone, Vinyl Siding, Wood Frame
Foundation	Poured Concrete

Additional Information

Date Listed	March 14th, 2025
Days on Market	41
Zoning	TC

Listing Details

Listing Office Hope Street Real Estate Corp.

Data is supplied by Pillar 9â„¢ MLSÂ® System. Pillar 9â„¢ is the owner of the copyright in its MLSÂ® System. Data is deemed reliable but is not guaranteed accurate by Pillar 9â„¢. The trademarks MLSÂ®, Multiple Listing ServiceÂ® and the associated logos are owned by The Canadian Real Estate Association (CREA) and identify the quality of services provided by real estate professionals who are members of CREA. Used under license.