

\$549,900 - 21 Plainsview Road, Strathmore

MLS® #A2199928

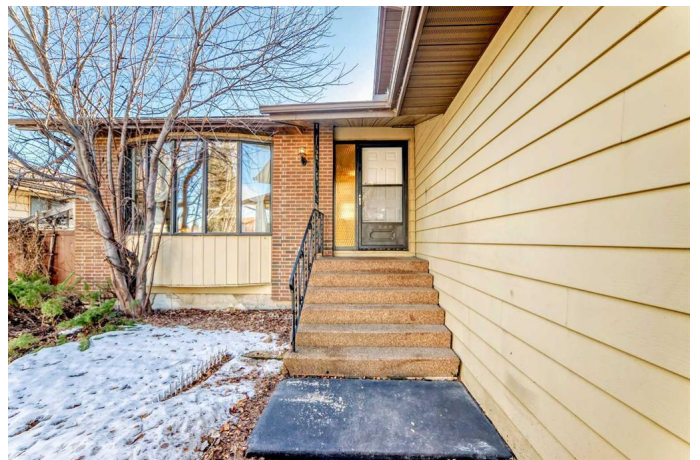
\$549,900

5 Bedroom, 4.00 Bathroom, 1,801 sqft

Residential on 0.14 Acres

Parkwood, Strathmore, Alberta

****Price Reduction!!**** Welcome to this stunning and spacious family home in the heart of Parkwood! With five bedrooms, three and a half bathrooms, and 2,629 square feet of developed living space, there is plenty of room for your family to grow and enjoy. Step inside to a bright and inviting sunken living room, the perfect place to relax or entertain guests. Upstairs, you'll find three generous bedrooms, a 4-piece main bath, and a large primary suite complete with its own private ensuite. The main level offers a warm and welcoming dining room that flows into the open-concept kitchen, a true chef's dream with stainless steel appliances, ample cupboard space, and a convenient breakfast bar. Just beyond, the spacious family room features large patio doors leading to a private, tree-lined backyard with no neighbors behind. Down the hall, an additional bedroom, a full bathroom, and a conveniently located laundry room add to the home's thoughtful design. The basement provides even more living space with plenty of room for relaxation and recreation. A versatile flex room offers endless possibilities, and the private sauna is the perfect place to unwind after a long day. Outside, a huge deck with a pergola offers a fantastic setting for summer gatherings, while the beautifully landscaped backyard provides a peaceful retreat. Mostly original, but freshly painted and ready for your family to make it their own. Nestled in the well-established community of Parkwood, you'll be close to



schools, parks, shopping, and all essential amenities. This is an incredible opportunity to own a beautiful family home in a prime location. Donâ€™t miss outâ€”schedule your viewing today!

Built in 1980

Essential Information

MLS® #	A2199928
Price	\$549,900
Bedrooms	5
Bathrooms	4.00
Full Baths	3
Half Baths	1
Square Footage	1,801
Acres	0.14
Year Built	1980
Type	Residential
Sub-Type	Detached
Style	1 and Half Storey
Status	Active

Community Information

Address	21 Plainsview Road
Subdivision	Parkwood
City	Strathmore
County	Wheatland County
Province	Alberta
Postal Code	T1P1H2

Amenities

Parking Spaces	4
Parking	Double Garage Attached
# of Garages	2

Interior

Interior Features	Open Floorplan, Sauna
Appliances	Dishwasher, Dryer, Garage Control(s), Microwave Hood Fan,

	Refrigerator, Electric Oven
Heating	Forced Air
Cooling	None
Fireplace	Yes
# of Fireplaces	1
Fireplaces	Family Room, Gas
Has Basement	Yes
Basement	Finished, Full

Exterior

Exterior Features	Private Yard
Lot Description	Back Yard, Front Yard, Private
Roof	Asphalt
Construction	Mixed
Foundation	Poured Concrete

Additional Information

Date Listed	March 6th, 2025
Days on Market	51
Zoning	R1

Listing Details

Listing Office	CIR Realty
----------------	------------

Data is supplied by Pillar 9â„¢ MLSÂ® System. Pillar 9â„¢ is the owner of the copyright in its MLSÂ® System. Data is deemed reliable but is not guaranteed accurate by Pillar 9â„¢. The trademarks MLSÂ®, Multiple Listing ServiceÂ® and the associated logos are owned by The Canadian Real Estate Association (CREA) and identify the quality of services provided by real estate professionals who are members of CREA. Used under license.

