

# \$515,000 - 20 Westlynn Drive W, Claresholm

MLS® #A2190709

**\$515,000**

5 Bedroom, 3.00 Bathroom, 1,573 sqft  
Residential on 0.19 Acres

NONE, Claresholm, Alberta

5-Bedroom Home with Golf Course Views -  
AMAZING FLOOR PLAN for family or  
Retirees!!

Located across from the golf course, this  
5-bed, 3-bath home (2002) offers scenic views  
and a smart layout ideal for families or retirees.

The main floor features a spacious primary  
suite with a walk-in closet and ensuite, two  
more bedrooms, main-floor laundry, and an  
open kitchen with island and walk-in pantry. A  
cozy gas fireplace anchors the living area.

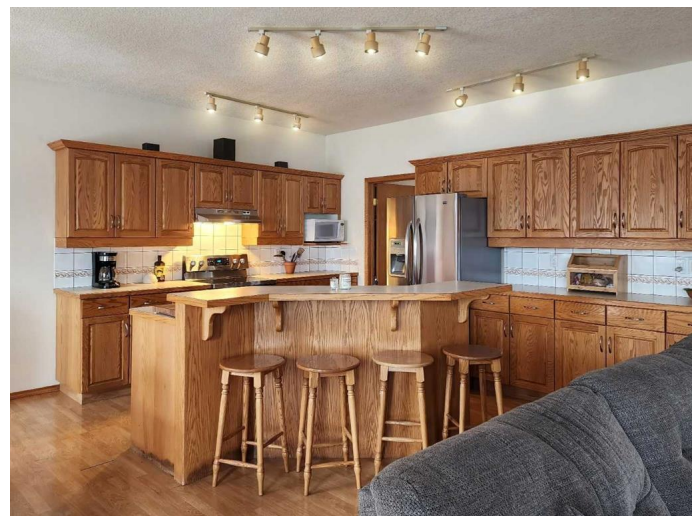
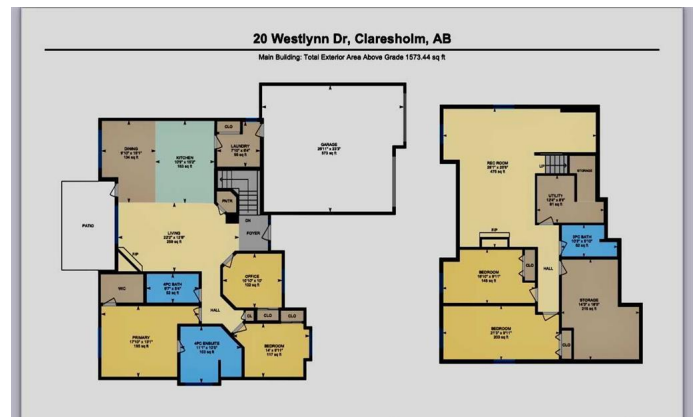
The finished basement includes a large rec  
room with a second fireplace, two bedrooms,  
and a huge storage/workshop area with  
in-floor heating.

Enjoy sunsets from the west-facing covered  
deck with gas BBQ hookup. The heated,  
oversized double garage fits a truck plus  
storage. The fully fenced yard features raised  
garden beds, drip irrigation, and underground  
sprinklers.

Nearly 1,500 sq. ft. on the main, ICF  
foundation, central A/C, and thoughtful finishes  
throughout.

Check out this floor plan â€” perfect for  
families or retirees!

Built in 2002



## Essential Information

MLS® #	A2190709
Price	\$515,000
Bedrooms	5
Bathrooms	3.00
Full Baths	3
Square Footage	1,573
Acres	0.19
Year Built	2002
Type	Residential
Sub-Type	Detached
Style	Bungalow
Status	Active

## Community Information

Address	20 Westlynn Drive W
Subdivision	NONE
City	Claresholm
County	Willow Creek No. 26, M.D. of
Province	Alberta
Postal Code	T0L 0T0

## Amenities

Parking Spaces	1
Parking	Double Garage Attached
# of Garages	2

## Interior

Interior Features	Kitchen Island, Open Floorplan, See Remarks, Soaking Tub, Pantry
Appliances	See Remarks
Heating	Forced Air
Cooling	Central Air
Fireplace	Yes
# of Fireplaces	1
Fireplaces	Gas, Living Room, Basement
Has Basement	Yes
Basement	Finished, Full

## Exterior

Exterior Features	BBQ gas line, Fire Pit
Lot Description	Few Trees, Garden, Irregular Lot
Roof	Asphalt Shingle
Construction	Stucco, Wood Frame
Foundation	ICF Block

**Additional Information**

Date Listed	February 6th, 2025
Days on Market	123
Zoning	R-1

**Listing Details**

Listing Office	RE/MAX REAL ESTATE - LETHBRIDGE (CLARESHOLM)
----------------	--

Data is supplied by Pillar 9â„¢ MLSÂ® System. Pillar 9â„¢ is the owner of the copyright in its MLSÂ® System. Data is deemed reliable but is not guaranteed accurate by Pillar 9â„¢. The trademarks MLSÂ®, Multiple Listing ServiceÂ® and the associated logos are owned by The Canadian Real Estate Association (CREA) and identify the quality of services provided by real estate professionals who are members of CREA. Used under license.